

Institute of Continuing Education

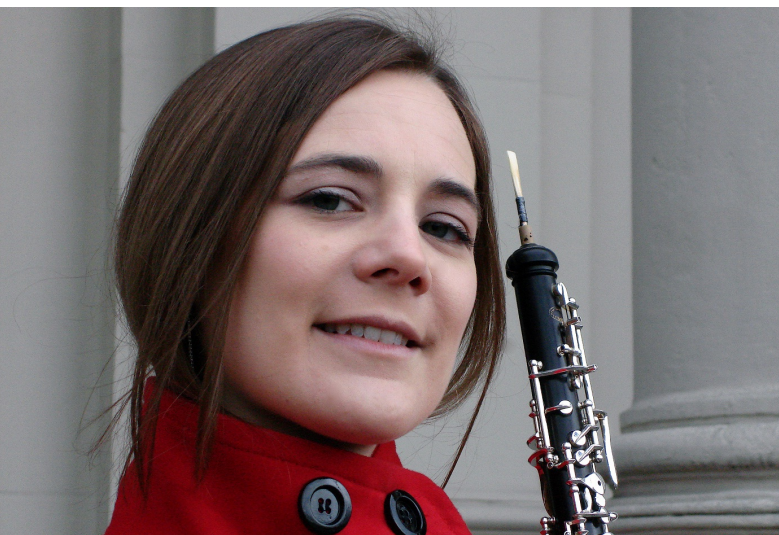
Double reed players' weekend

Weekend course at Madingley Hall: 30 May – 1 June 2014

Enjoyment of performance and developing control of your instrument are the focus of this relaxed and informal course for oboe, bassoon and other double reed players. The tutors, **Shelly Organ** and **Holly Randall**, are both experienced orchestral performers and teachers, and are members of the acclaimed Gallimaufry Ensemble – resident wind ensemble at Dartington International Summer School 2011–2013. The course is open to anyone of Grade 6 standard or above.

Enjoy the Cambridge 'college' experience at Madingley Hall

Madingley Hall is a 16th-century manor house situated in the tranquil village of Madingley on the outskirts of Cambridge. As a student you will enjoy meals in the elegant Dining Hall and first-rate facilities in an atmospheric and inspiring setting. You can choose to stay at the Hall for the duration of your course, or attend as a non-resident.



Find out more and book online: www.ice.cam.ac.uk/reeds

Email: enquiries@ice.cam.ac.uk | tel: +44 (0)1223 746262